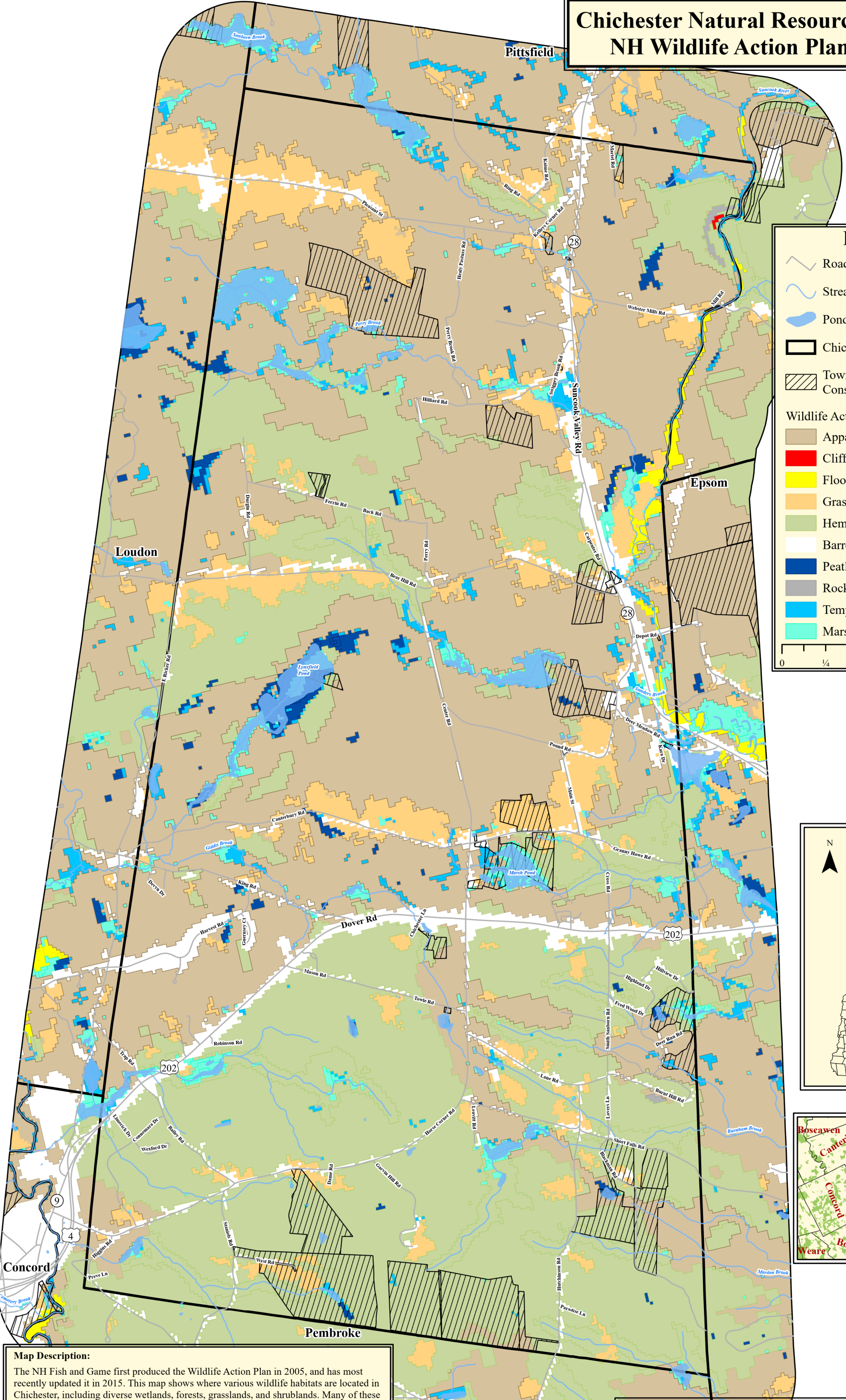


Chichester Natural Resources Inventory NH Wildlife Action Plan Habitats



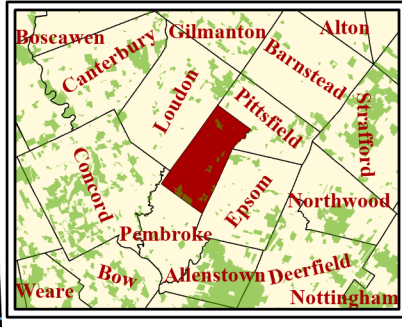
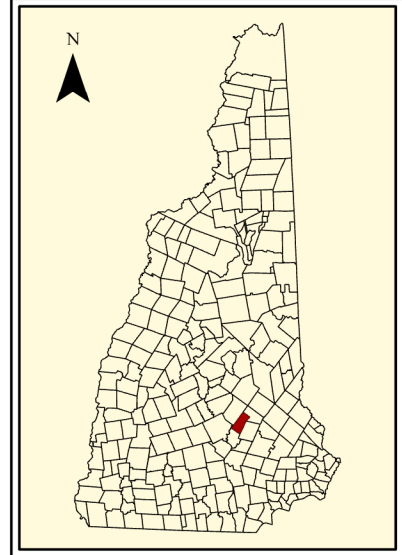
Legend

- Roads
- Streams
- Ponds
- Chichester Boundary
- Town-owned and Conservation Lands

Wildlife Action Plan Habitat

- Appalachian oak-pine
- Cliff and Talus slope
- Floodplain forest
- Grassland
- Hemlock-hardwood-pine
- Barren or Developed
- Peatland
- Rocky ridge
- Temperate swamp
- Marsh and shrub wetland

0 1/4 1/2 1 Mi



Map Description:
The NH Fish and Game first produced the Wildlife Action Plan in 2005, and has most recently updated it in 2015. This map shows where various wildlife habitats are located in Chichester, including diverse wetlands, forests, grasslands, and shrublands. Many of these habitats support species of conservation concern. Conservation lands have also been added to show where the many town-owned and private lands are located that have been protected over time, as well as the resources they protect.

Data Sources:
-Roads from NH DOT, downloaded from NH GRANIT
-Surface Water and streams (NHD), downloaded from NH GRANIT
-Wetlands from NWS, downloaded from NH GRANIT
-Political Boundaries, downloaded from NH GRANIT
-Conservation Lands, downloaded from NH GRANIT
-WAP Habitats from NH Fish and Game, downloaded from NH GRANIT

Map created for planning purposes only. Accuracy of data to be verified by end user. Please reference Moosewood Ecological GIS Data Disclaimer for more information on its use and purpose.

Prepared for the Town of Chichester
Coordinate System: NAD 1983 StatePlane New Hampshire FIPS 2800 Feet
Projection: Transverse Mercator
Datum: North American 1983
False Easting: 984,250.0000
False Northing: 0.0000
Central Meridian: -71.6667
Scale Factor: 1.0000
Latitude of Origin: 42.5000
Units: Foot US

Moosewood Ecological LLC
Innovative Conservation Solutions for New England

Jeffrey N. Littleton, M.S.
Conservation Ecologist
(603) 831-1980
Moosewood Ecological LLC
Innovative Conservation Solutions for New England

Date: 8/1/2020