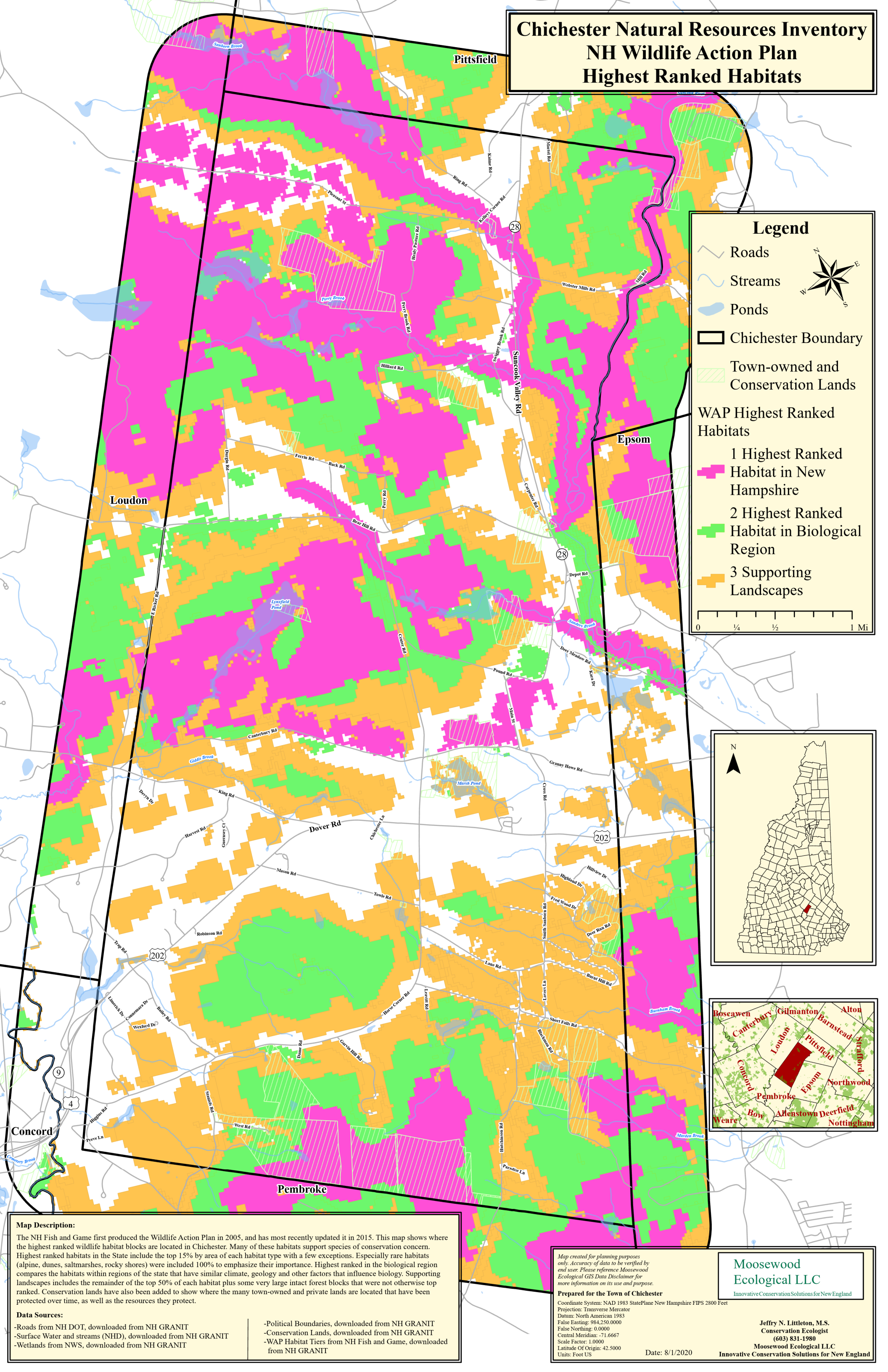


Chichester Natural Resources Inventory NH Wildlife Action Plan Highest Ranked Habitats



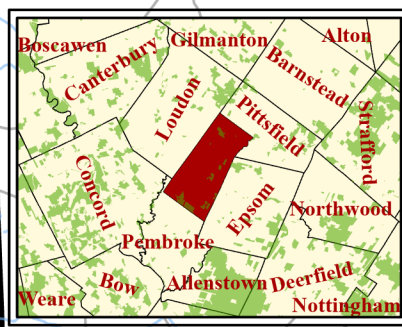
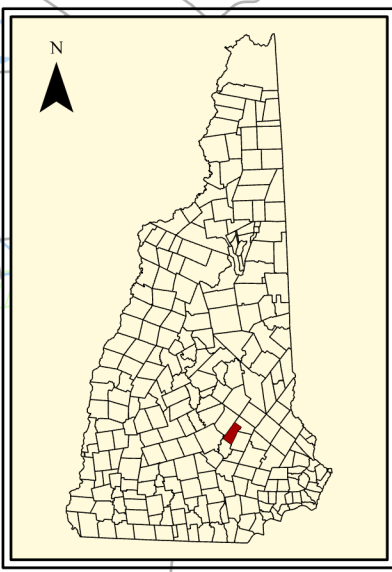
Legend

- Roads
- Streams
- Ponds
- Chichester Boundary
- Town-owned and Conservation Lands

WAP Highest Ranked Habitats

- 1 Highest Ranked Habitat in New Hampshire
- 2 Highest Ranked Habitat in Biological Region
- 3 Supporting Landscapes

0 1/4 1/2 1 Mi



Map Description:
The NH Fish and Game first produced the Wildlife Action Plan in 2005, and has most recently updated it in 2015. This map shows where the highest ranked wildlife habitat blocks are located in Chichester. Many of these habitats support species of conservation concern. Highest ranked habitats in the State include the top 15% by area of each habitat type with a few exceptions. Especially rare habitats (alpine, dunes, saltmarshes, rocky shores) were included 100% to emphasize their importance. Highest ranked in the biological region compares the habitats within regions of the state that have similar climate, geology and other factors that influence biology. Supporting landscapes includes the remainder of the top 50% of each habitat plus some very large intact forest blocks that were not otherwise top ranked. Conservation lands have also been added to show where the many town-owned and private lands are located that have been protected over time, as well as the resources they protect.

Data Sources:

- Roads from NH DOT, downloaded from NH GRANIT
- Surface Water and streams (NHD), downloaded from NH GRANIT
- Wetlands from NWS, downloaded from NH GRANIT
- Political Boundaries, downloaded from NH GRANIT
- Conservation Lands, downloaded from NH GRANIT
- WAP Habitat Tiers from NH Fish and Game, downloaded from NH GRANIT

Map created for planning purposes only. Accuracy of data to be verified by end user. Please reference Moosewood Ecological GIS Data Disclaimer for more information on its use and purpose.

Prepared for the Town of Chichester
 Coordinate System: NAD 1983 StatePlane New Hampshire FIPS 2800 Feet
 Projection: Transverse Mercator
 Datum: North American 1983
 False Easting: 984,250.0000
 False Northing: 0.0000
 Central Meridian: -71.6667
 Scale Factor: 1.0000
 Latitude Of Origin: 42.5000
 Units: Foot US

Date: 8/1/2020

Moosewood Ecological LLC
 Innovative Conservation Solutions for New England

Jeffrey N. Littleton, M.S.
 Conservation Ecologist
 (603) 831-1980
 Moosewood Ecological LLC
 Innovative Conservation Solutions for New England