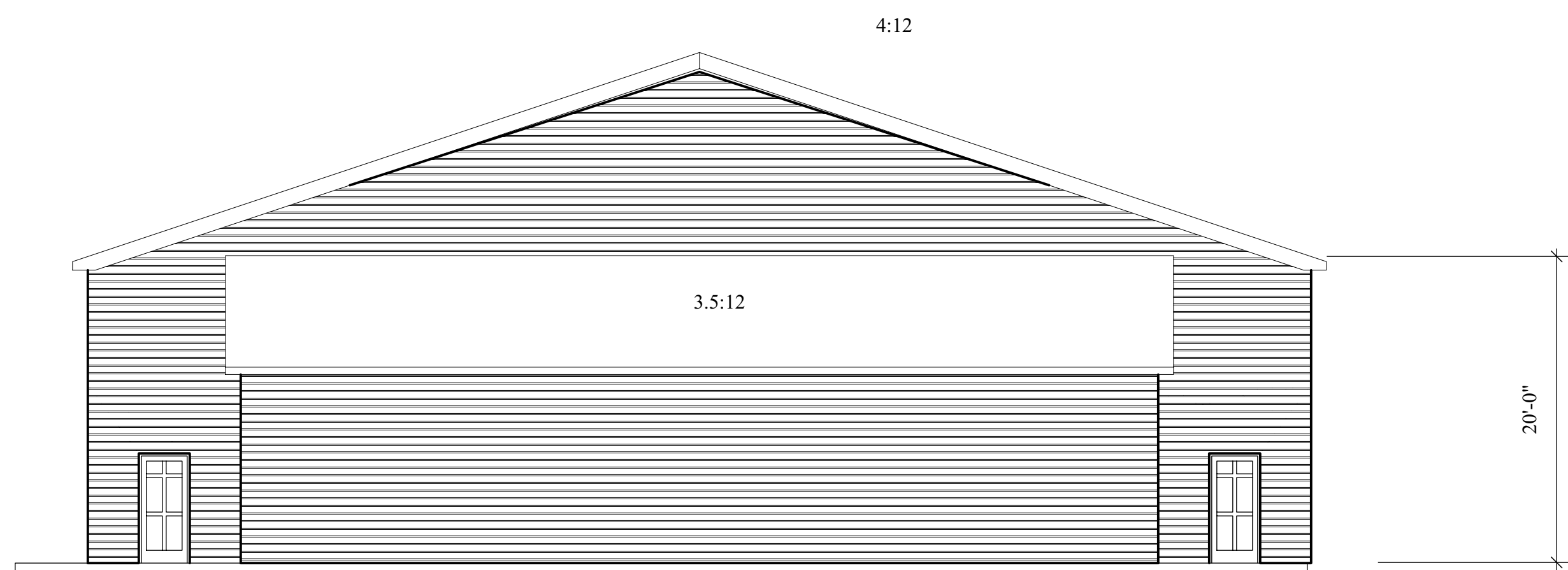
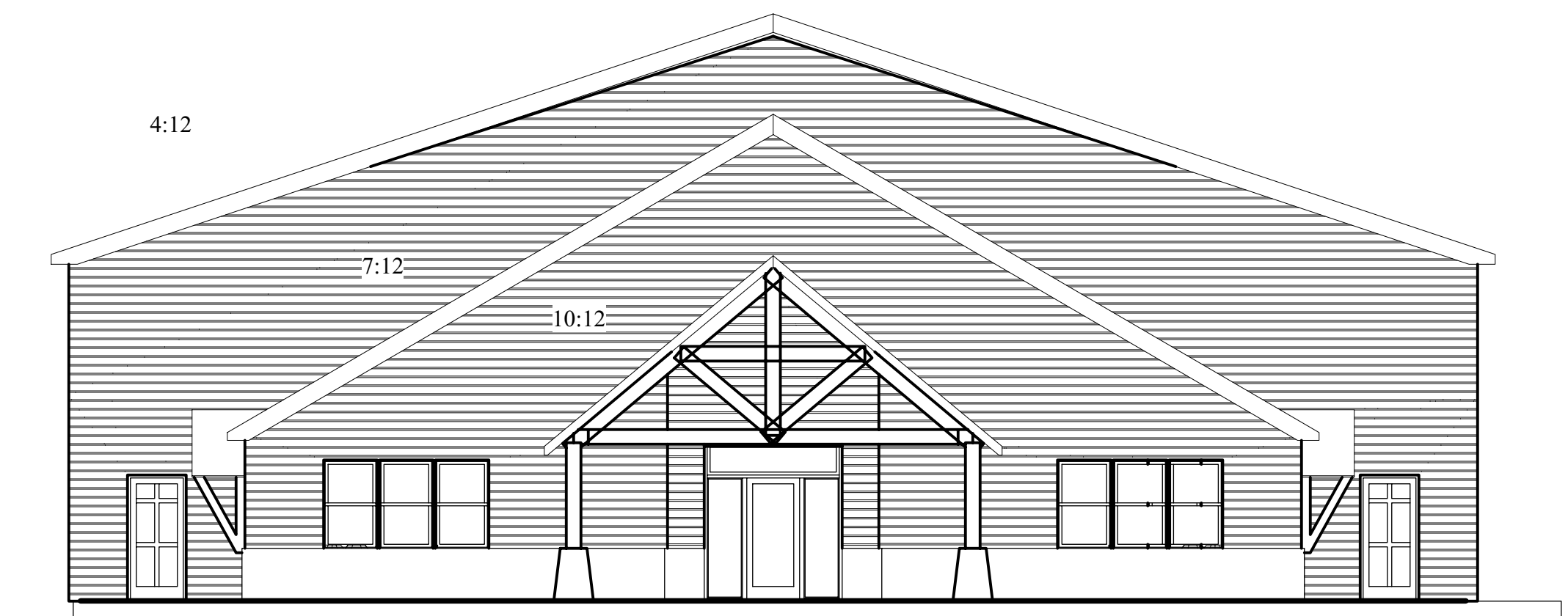


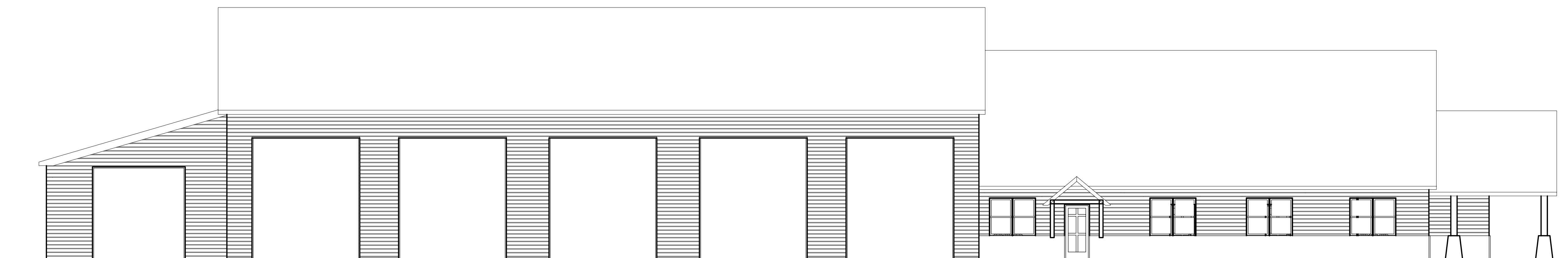
East Elevation  
Scale: 1/8" = 1'-0"



North Elevation  
Scale: 1/8" = 1'-0"



South Elevation  
Scale: 1/8" = 1'-0"



West Elevation  
Scale: 1/8" = 1'-0"

Tony Fallon Architecture  
501 Barn Door Gap Strafford, New Hampshire 03884-6233  
603 269 3206 tony@tonyfallon.com  
tonyfallon.com Licensed by New Hampshire, Maine, & Massachusetts

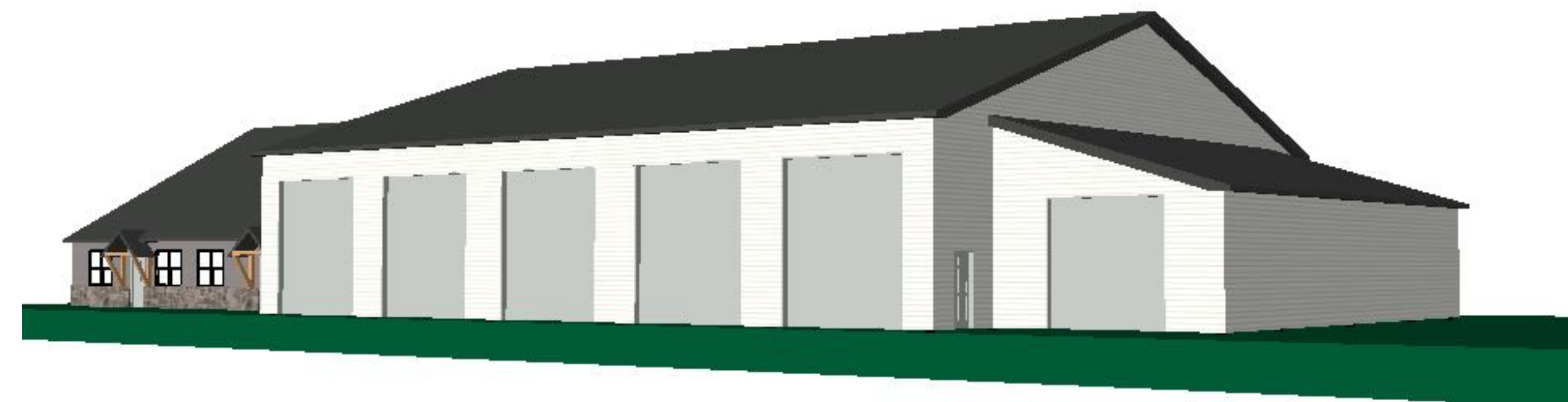
copyright  
10 March 2020

DBU Construction  
Tax Map/Lot 4/151 on Route 4  
Chichester, New Hampshire

Front View  
High Rear View



A.01



Foundation Plan  
Scale: 1/8" = 1'-0"

304.1 Business Group B. Business Group B occupancy includes, among others, the use of a building or structure, or a portion thereof, for office, professional or service-type transactions, including storage of records and accounts.

311.2 Storage S.1 occupancy includes repair garage.

Table 504.3 For B & F-1 the building is allowed to be 50 feet above grade for Type 5A building and 40 feet high for Type 5B.

Table 506.2 allows for 8,500 sf footprint with F-1 in 5B and 14,000 sf in 5A along with 9,000 sf footprint with B in 5B and 18,000 sf footprint with B in 5A.

508.3.2 Allowable building area and height. The allowable building area and height of the building or portion thereof shall be based on the most restrictive allowances for the occupancy groups under consideration for the type of construction of the building in accordance with Section 503.1.

508.3.3 Separation. No separation is required between non-separated occupancies.

5B with B and F-1 shows that 8,500 sf is the maximum square footage footprint without allowable increases. We have a 13,126 sf footprint and 543' perimeter. We have 30 foot of open space on all four sides of the building. So the allowable increase is  $(543/543-0.25)/30/30$  or a 0.75 increase in the base allowable of 8,500 sf. So the actual allowable footprint for this project is  $(8,500)1.75$  which is 14,875 sf. And so, our actual square footage of 13,126 is less than an allowable 5B including increase of 14,875 and thus we may have the wood frame be unprotected as a 5B Construction Type.

Since we meet the square footages in Table 506.2 for the use groups, we can have non separated occupancies of B and F-1. IE there is no separation required between the garage and the office area.

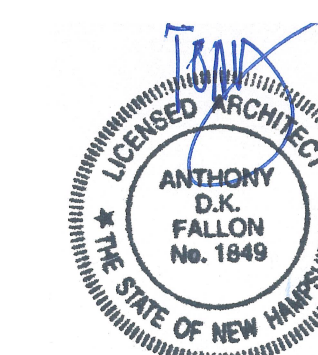
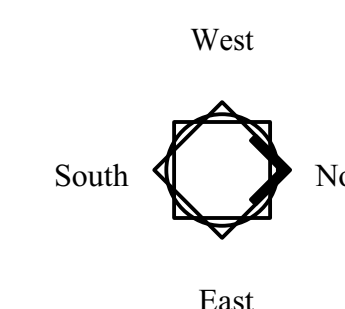
1010.1.2.1 Direction of swing. Pivot or side-hinged swinging doors shall swing in the direction of egress travel where serving a room or area containing an occupant load of 50 or more persons or a Group H occupancy. Exit Doors may swing in since no area has more than 50 people.

A fire-resistance rating is not required for corridors in an occupancy in Group B that is a space requiring only a single means of egress complying with Section 1006.2. We meet this single means of egress exception, so no rating of corridors.

2015 IECC Table C402.1.3 in Climate Zone 6 shows: R.10 to 24 inches below grade for unheated slab  
Walls: Wood Framed: R.20 + R.3.8 CI  
Mass: R.13.3 CI  
Attic: R.49  
Doors: U 0.37  
Garage Doors: R 4.75

2015 NFPA

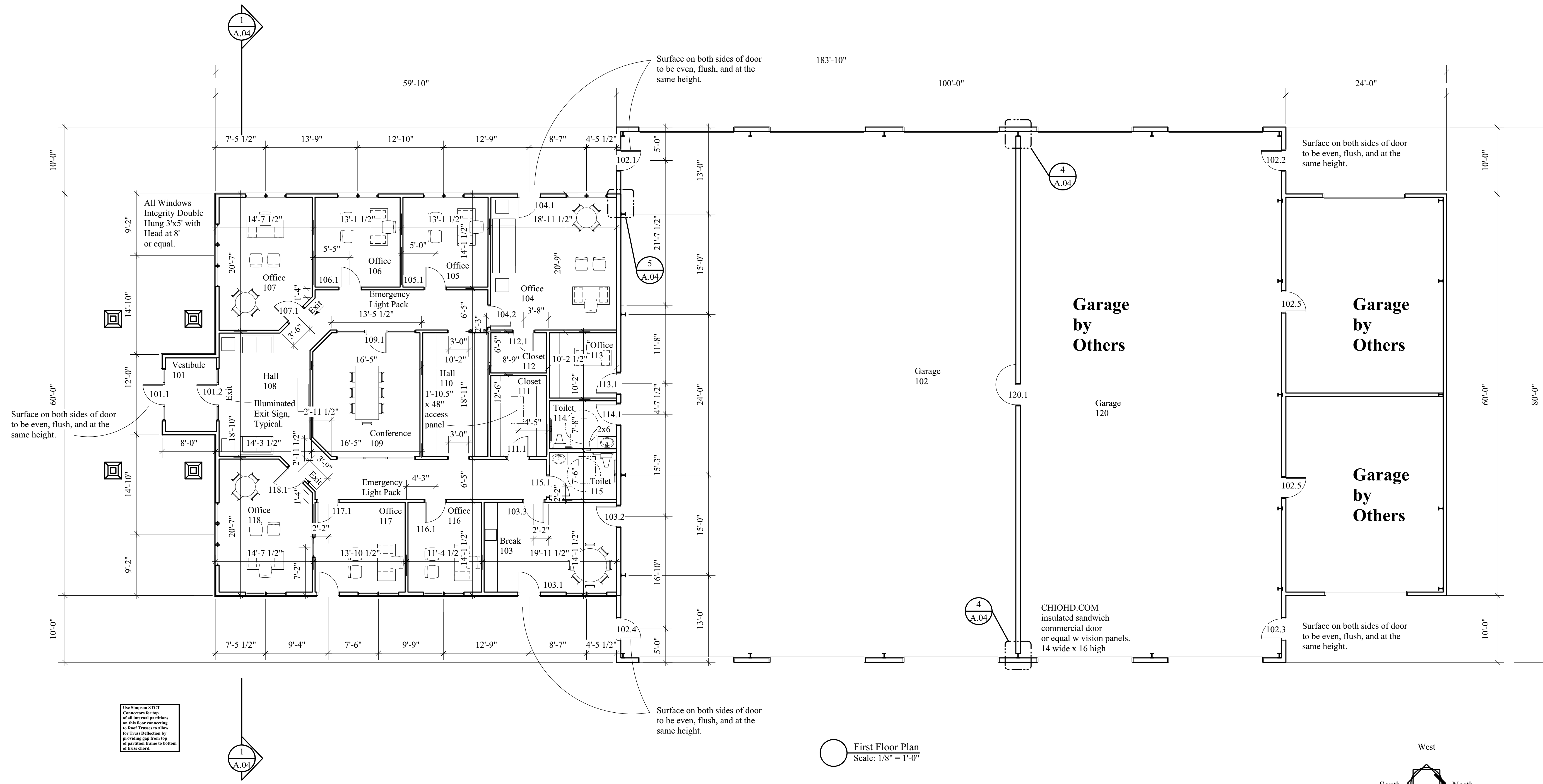
7.1.4.1\* Interior Wall and Ceiling Finish in Exit Enclosures. Interior wall and ceiling finish shall be in accordance with Section 10.2. In exit enclosures, interior wall and ceiling finish materials complying with Section 10.2 shall be Class A or Class B.  
7.1.4.2\* Interior Floor Finish in Exit Enclosures. New interior floor finish in exit enclosures, including stair treads and risers, shall be not less than Class II in accordance with Section 10.2.



Number	Size	Fire Rating	Hardware Set	Type	Sidelights	Transom	Notes
101.1	3'x7'	Zero		1 Full Light		2'0"	1'9"
101.2	3'x7'	Zero		2 Full Light		2'0"	1'9"
102.1	3'x7'	Zero		3 Solid Panel	No	No	
102.2	3'x7'	Zero		3 Solid Panel	No	No	
102.3	3'x7'	Zero		3 Solid Panel	No	No	
102.4	3'x7'	Zero		3 Solid Panel	No	No	
102.5	3'x7'	Zero		4 Solid Panel	No	No	
102.6	3'x7'	Zero		4 Solid Panel	No	No	
103.1	3'x7'	Zero		3 Solid Panel	No	No	
103.2	3'x7'	Three		4 Half Light	No	No	
103.3	3'x7'	Zero		5 Half Light	No	No	
104.1	3'x7'	Zero		3 Solid Panel	No	No	
104.2	3'x7'	Zero		4 Half Light	No	No	
105.1	3'x7'	Zero		4 Half Light	No	No	
106.1	3'x7'	Zero		4 Half Light	No	No	
107.1	3'x7'	Zero		4 Half Light	No	No	
109.1	3'x7'	Zero		5 Full light		4'0"	1'6"
111.1	3'x7'	Zero		4 Solid Panel	No	No	
112.1	3'x7'	Zero		4 Solid Panel	No	No	
113.1	3'x7'	Three Hour		4 Flush	No	No	
114.1	3'x7'	Three Hour		6 Flush	No	No	
115.1	3'x7'	Zero		6 Solid Panel	No	No	
116.1	3'x7'	Zero		4 Half Light	No	No	
117.1	3'x7'	Zero		4 Half Light	No	No	
117.2	3'x7'	Zero		3 Solid Panel	No	No	
118.1	3'x7'	Zero		4 Half Light	No	No	
120.1	3'x7'	Three Hour		7 Flush	No	No	

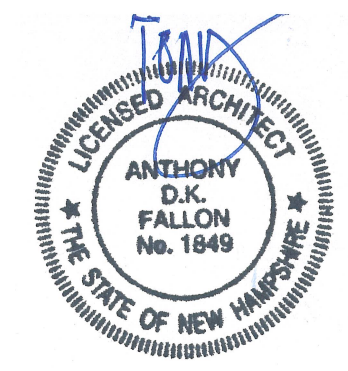
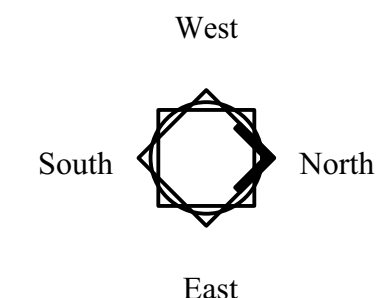
- Hardware Set 1**  
1.5 Pair NRP Hinges  
1 Cylinder with Exit Device with ADA Lever Set or Paddle with Push/Pull  
1 Power Opener/Closer with Paddles for Power Operation only at need:  
GT 710 by Northeast Door 603.225.7826 Jake Curtin or equal.  
1 Weatherstrip  
1 Door Bottom  
1 ADA Threshold
- Hardware Set 2**  
1.5 Pair Hinges  
1 Exit Device with ADA Lever Set or Paddle with Push/Pull  
1 Power Opener/Closer with Paddles for Power Operation only at need:  
GT 710 by Northeast Door 603.225.7826 Jake Curtin or equal.  
1 Weatherstrip  
1 Door Bottom  
1 ADA Threshold
- Hardware Set 3**  
1.5 Pair NRP Hinges  
1 Mortise Set with cylinder, ADA Lever, & Deadbolt opened by interior lever  
1 Closer  
1 Weatherstrip  
1 Door Bottom  
1 ADA Threshold

- Hardware Set 4**  
1.5 Pair Hinges  
1 Leverset Office Function  
3 Silencers if Hollow Metal  
1 Door Stop  
1 closer at 3 hour
- Hardware Set 5**  
1.5 Pair Hinges  
1 Leverset Passage Function  
3 Silencers if Hollow Metal  
1 Door Stop
- Hardware Set 6**  
1.5 Pair Hinges  
1 Leverset Privacy Function  
3 Silencers if Hollow Metal  
1 Door Stop  
1 closer at 3 hour
- Hardware Set 7**  
1.5 Pair Hinges  
1.0 ADA Closer  
1 Leverset Passage Function  
1.0 Hold Open tied to alarm or integrated smoke detector  
3 Silencers if Hollow Metal  
1 Door Stop



Use Simpson STCT Connectors for top of all interior partitions on this floor connecting to Roof Trusses to allow for Truss Deflection by providing gap from top of partition frame to bottom of truss chord.

First Floor Plan  
Scale: 1/8" = 1'-0"



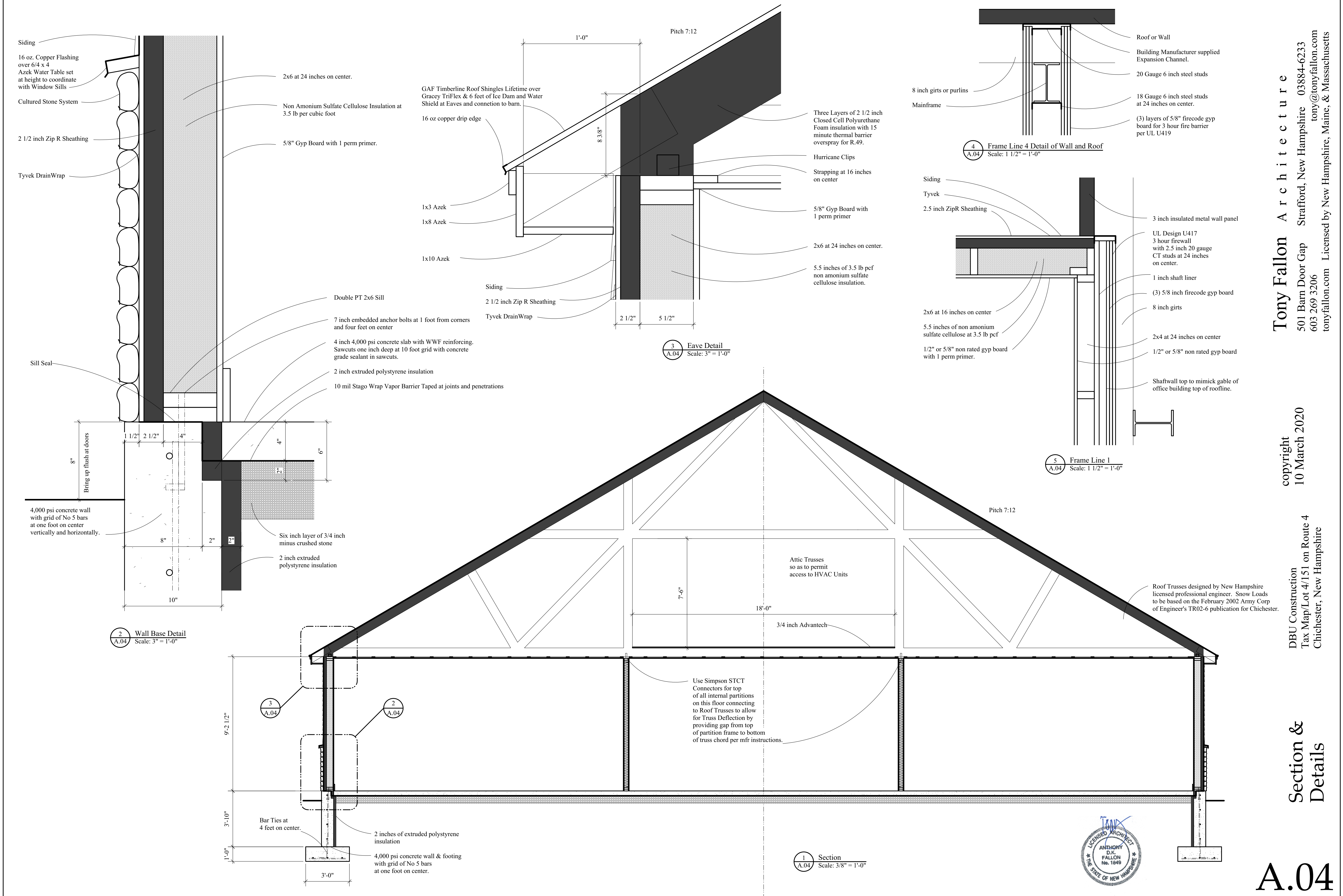
A.03

**Tony Fallon Architecture**  
501 Barn Door Gap Strafford, New Hampshire 03884-6233  
603 269 3206 tonyfallon.com  
Licensed by New Hampshire, Maine, & Massachusetts

copyright  
10 March 2020

DBU Construction  
Tax Map/Lot 4/151 on Route 4  
Chichester, New Hampshire

First Floor  
Plan



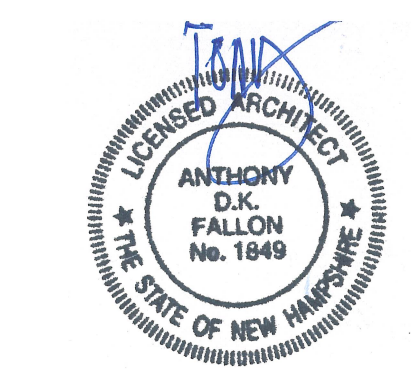
**Tony Fallon Architecture**  
 501 Barn Door Gap Strafford, New Hampshire 03884-6233  
 tonyfallon.com  
 Licensed by New Hampshire, Maine, & Massachusetts

copyright  
 10 March 2020

DBU Construction  
 Tax Map/Lot 4/151 on Route 4  
 Chichester, New Hampshire

**Section & Details**

**A.04**



Roof Trusses designed by New Hampshire licensed professional engineer. Snow Loads to be based on the February 2002 Army Corp of Engineer's TR02-6 publication for Chichester.

Use Simpson STCT Connectors for top of all internal partitions on this floor connecting to Roof Trusses to allow for Truss Deflection by providing gap from top of partition frame to bottom of truss chord per mfr instructions.

1 Section  
 A.04 Scale: 3/8" = 1'-0"

3 Eave Detail  
 A.04 Scale: 3" = 1'-0"

5 Frame Line 1  
 A.04 Scale: 1 1/2" = 1'-0"

4 Frame Line 4 Detail of Wall and Roof  
 A.04 Scale: 1 1/2" = 1'-0"

2 Wall Base Detail  
 A.04 Scale: 3" = 1'-0"

