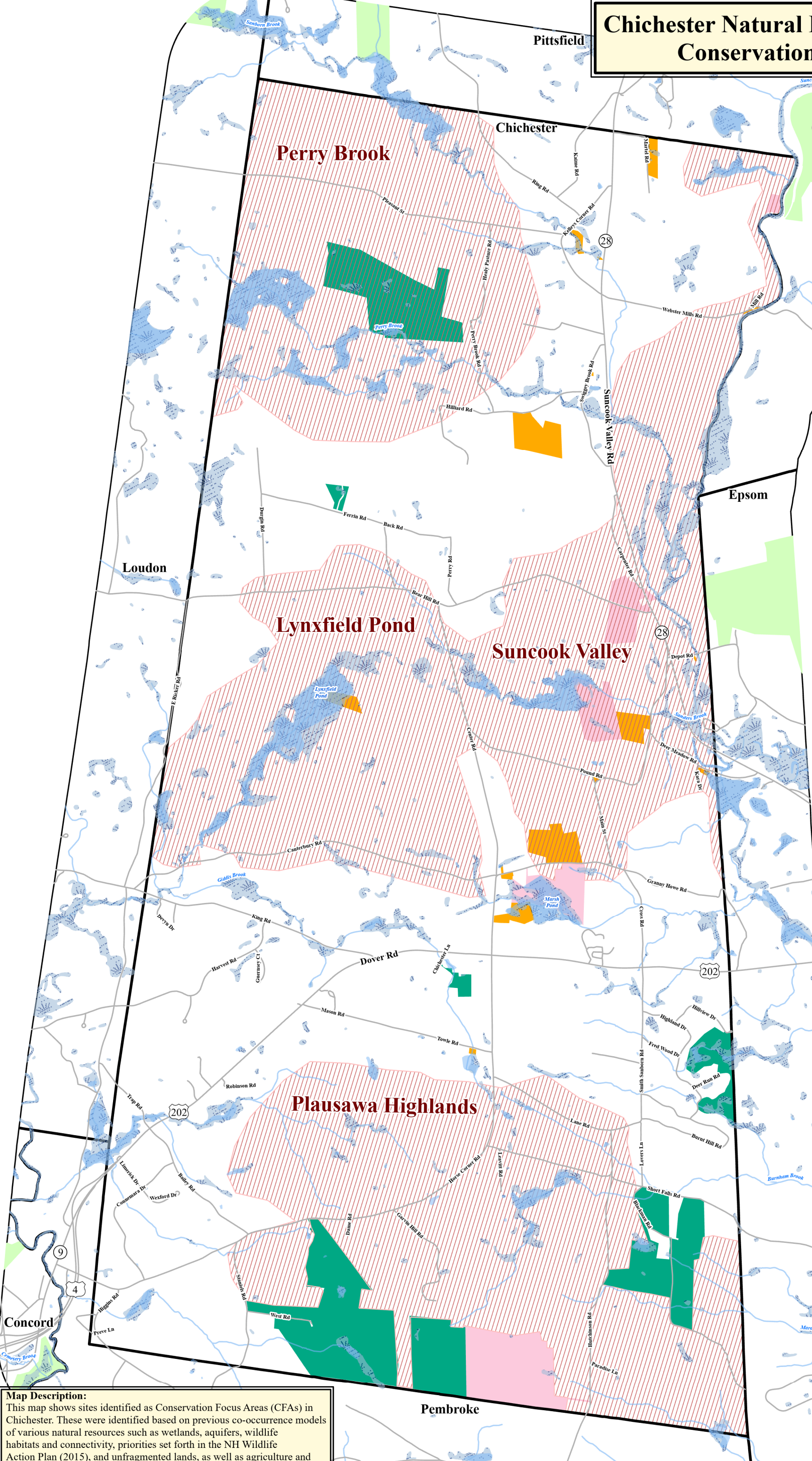
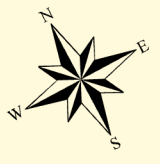
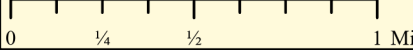
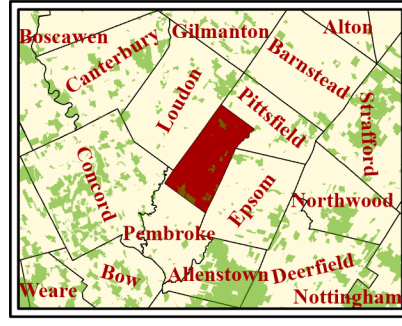
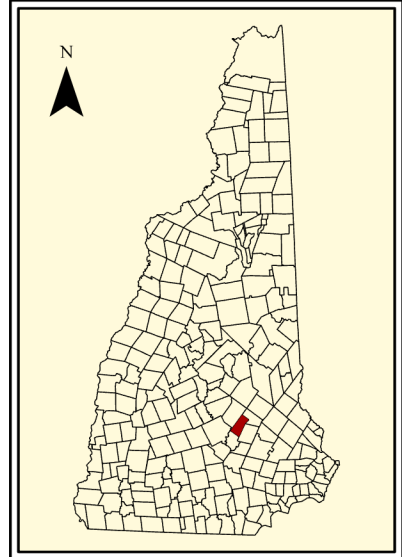


Chichester Natural Resources Inventory Conservation Focus Areas



Legend

- Roads
- Streams
- Ponds
- Wetlands
- Chichester Boundary
- Publicly-owned Lands
- Publicly-owned Conservation Lands
- Private Conservation Lands
- Other Conservation Lands
- Conservation Focus Areas

Map Description:
This map shows sites identified as Conservation Focus Areas (CFAs) in Chichester. These were identified based on previous co-occurrence models of various natural resources such as wetlands, aquifers, wildlife habitats and connectivity, priorities set forth in the NH Wildlife Action Plan (2015), and unfragmented lands, as well as agriculture and forest resources. This map provides the Town and the Chichester Conservation Commission with a sense of where they should focus their conservation planning efforts to help maximize its natural resources protection for the community.

Data Sources:
 -Roads from NH DOT, downloaded from NH GRANIT
 -Surface Water and streams (NHD), downloaded from NH GRANIT
 -Wetlands from NWS, downloaded from NH GRANIT
 -Political Boundaries, downloaded from NH GRANIT
 -Conservation Lands, downloaded from NH GRANIT

Map created for planning purposes only. Accuracy of data to be verified by end user. Please reference Moosewood Ecological GIS Data Disclaimer for more information on its use and purpose.

Prepared for the Town of Chichester
 Coordinate System: NAD 1983 StatePlane New Hampshire FIPS 2800 Feet
 Projection: Transverse Mercator
 Datum: North American 1983
 False Easting: 984,250.0000
 False Northing: 0.0000
 Central Meridian: -71.6667
 Scale Factor: 1.0000
 Latitude Of Origin: 42.5000
 Units: Foot US

Moosewood Ecological LLC
 Innovative Conservation Solutions for New England

Jeffrey N. Littleton, M.S.
 Conservation Ecologist
 (603) 831-1980
 Moosewood Ecological LLC
 Innovative Conservation Solutions for New England

Date: 11/20/2020