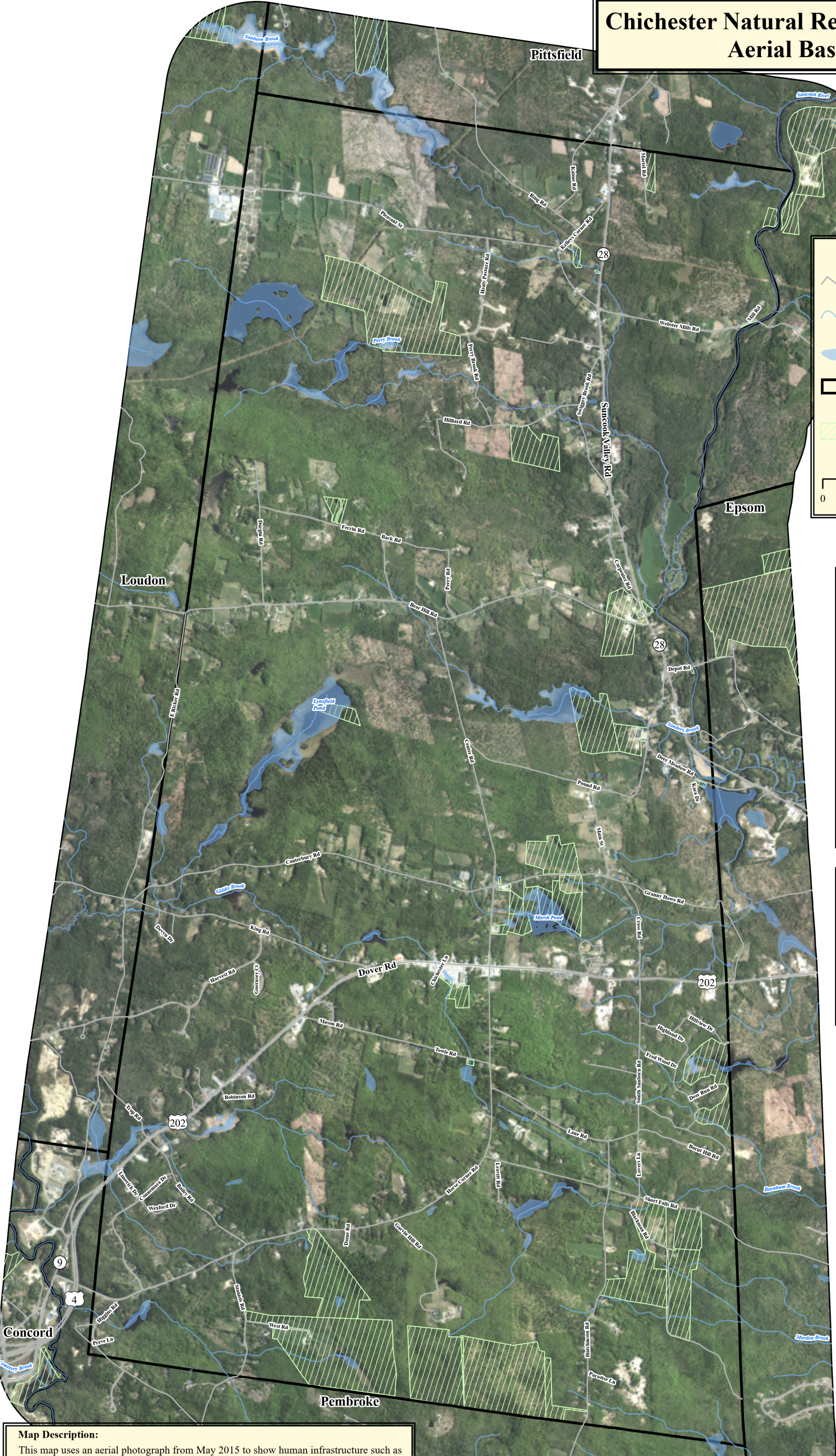
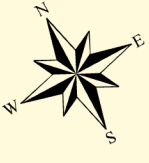


Chichester Natural Resources Inventory Aerial Base Map

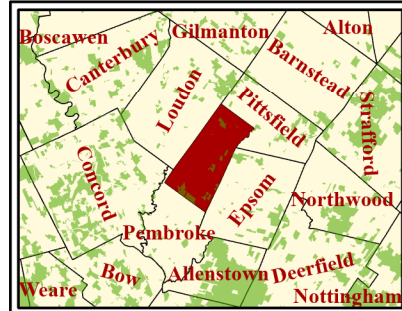
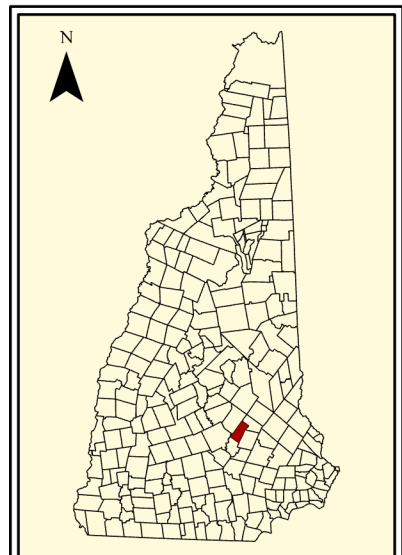


Legend

- Roads
- Streams
- Ponds
- Chichester Boundary
- Town-owned and Conservation Lands



0 1/4 1/2 1 Mi



Map Description:
This map uses an aerial photograph from May 2015 to show human infrastructure such as roads and residential, commercial, and industrial developments, as well as various natural features that occur in Chichester. Streams, ponds, and roads help to orient the map viewer within the town. Conservation lands have also been added to show where the many town-owned and private lands are located that have been protected over time.

Data Sources:

- Roads from NH DOT, downloaded from NH GRANIT
- Surface Water and streams (NHD), downloaded from NH GRANIT
- Wetlands from NWS, downloaded from NH GRANIT
- Political Boundaries, downloaded from NH GRANIT
- Conservation Lands, downloaded from NH GRANIT
- WMS Aerial Imagery (May 2015, 1-ft resolution), downloaded from NH GRANIT

Map created for planning purposes only. Accuracy of data to be verified by end user. Please reference Moosewood Ecological GIS Data Disclaimer for more information on its use and purpose.

Prepared for the Town of Chichester

Coordinate System: NAD 1983 StatePlane New Hampshire FIPS 2800 Feet
 Projection: Transverse Mercator
 Datum: North American 1983
 False Easting: 984,250,000
 False Northing: 0.0000
 Central Meridian: -71.6667
 Scale Factor: 1.0000
 Latitude Of Origin: 42.5000
 Units: Foot US

Date: 8/1/2020

Moosewood Ecological LLC
 Innovative Conservation Solutions for New England

Jeffrey N. Littleton, M.S.
 Conservation Ecologist
 (603) 831-1980
 Moosewood Ecological LLC
 Innovative Conservation Solutions for New England